



COSUMNES
COMMUNITY SERVICES DISTRICT

Beeman Park Revitalization

February 22, 2024 | COSUMNES COMMUNITY SERVICES DISTRICT



Our Mission

The Cosumnes CSD is dedicated to enhancing the quality of life of the residents, businesses, visitors, and employees within our diverse community by protecting lives, property, and the environment through superior fire suppression, emergency medical services, fire prevention, and special operations response; and by providing parks and recreation services through well-maintained parks and recreational opportunities for health, wellness, and social interactions.

Our Vision

Be an innovative, inclusive, and intentional, regional leader committed to providing exceptional services that exceed expectations and enhance the quality of life of those we serve.

Our Values

- Safety & Mitigating Risk
- Financial Responsibility
- High-Quality Workforce
- Service to the Community
- Diversity, Equity & Access



COSUMNES
COMMUNITY SERVICES DISTRICT

Agenda

- Welcome
- Park Location
- Park Planning Process
- Funding and Project Budget
- First Public Meeting
- Concept Design
- Next Steps

Beeman Park

Location

Benefit Zone 6: Central Elk Grove

- 10 total parks
- 140 acres of park land
- Beeman Park is 3.5 acres
- Built in 1983



Park Planning Process

Step Two: Community Engagement

- Two Public Workshops
- Online Interaction
- Community Feedback
- Concept Plan Development



PARK PLANNING PROCESS



Funding



The Beeman Park Revitalization funding has been provided as follows:

- Measure E (Safe Parks): \$300,000
 - American Rescue Plan (ARPA): \$100,000
 - L&L Reserves: \$565,000
-
- Total Project Budget: \$965,000

Project Budget



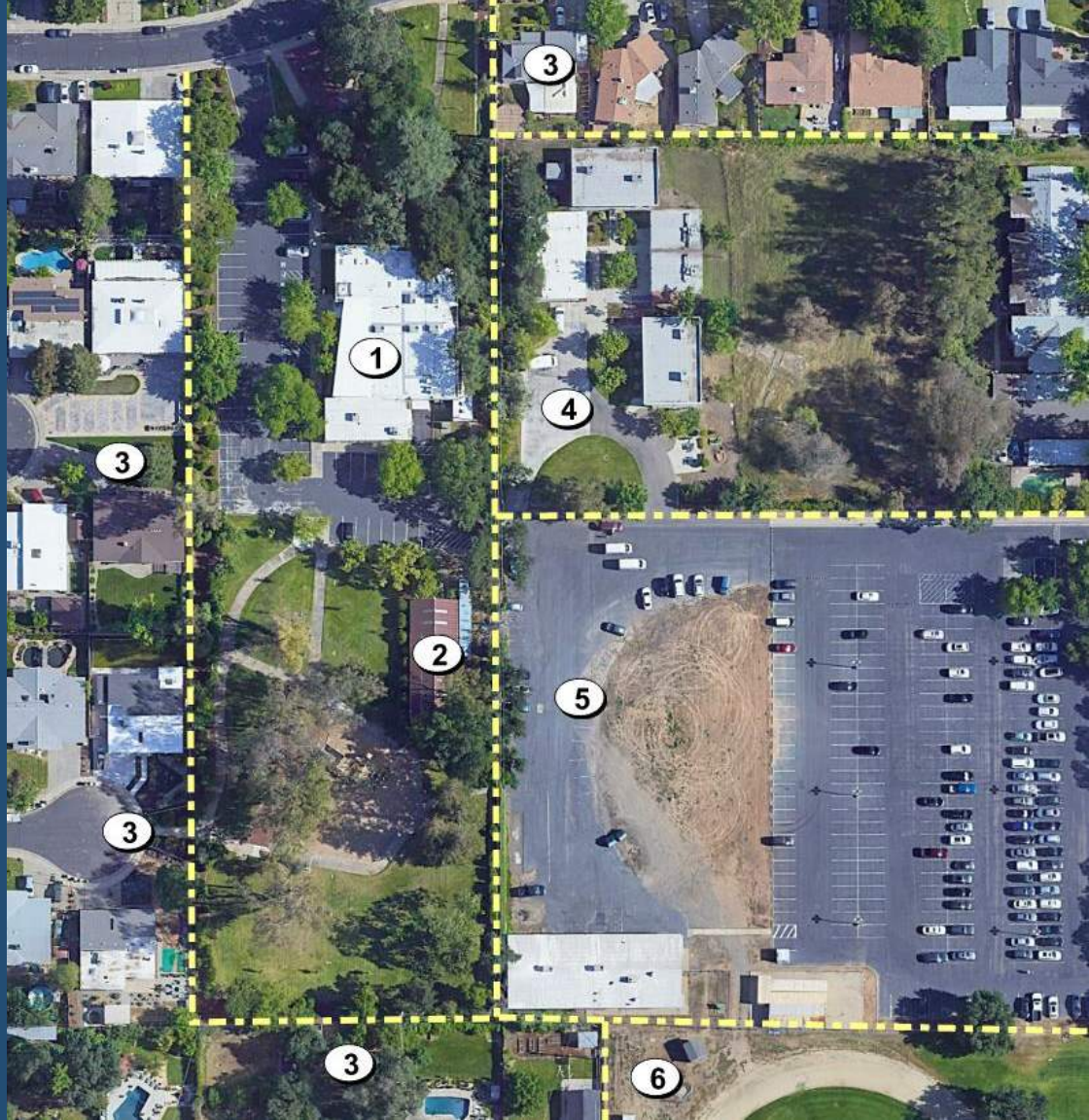
Capital Improvement Plan (CIP)

The Beeman Park Revitalization budget is outlined in the latest CIP as follows:

- Construction: \$770,000
- Design: \$110,000
- Construction Management: \$40,000
- Permit Fees: \$10,000
- Project Contingency: \$35,000
- Total Project Budget: \$965,000

Surroundings

1. Albani Recreation Center
2. Barn Building
3. Residences
4. Elk Grove Adult Community Training
5. Elk Grove Unified School District Administration
6. Joseph Kerr Middle School



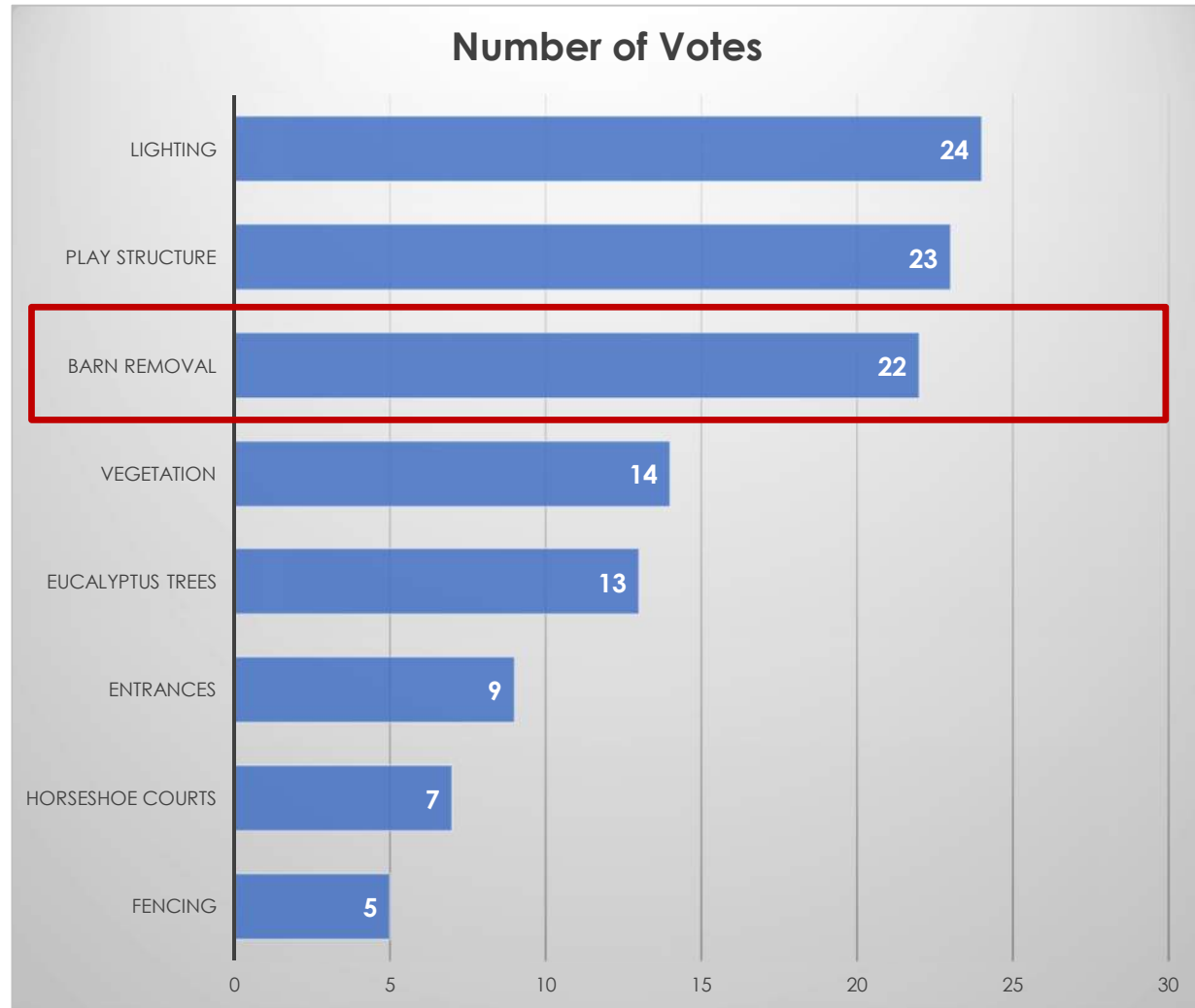
First Public Meeting

- 37 community members attended
- Six groups developed designs
- Two-week Public Comment Period
- 26 comment forms received



Project Concerns

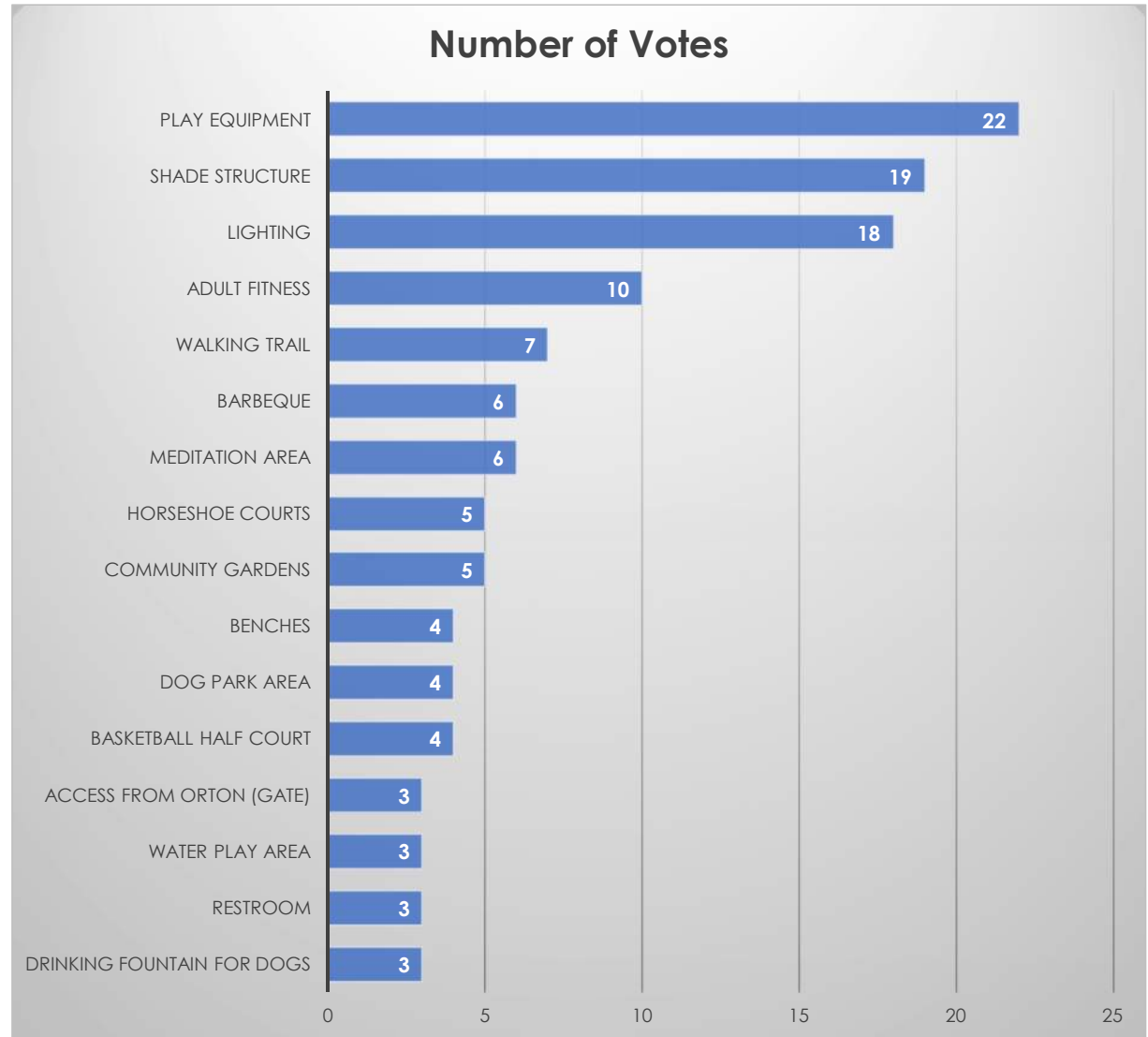
- Security Lighting
- Play Structure
- Barn Removal
- Overgrown Vegetation
- Eucalyptus Trees
- Neighborhood Entrances
- Horseshoe Courts
- Fencing



= Phase 2

Project Priorities

- Play Equipment
- Shade Structure
- Security Lighting
- Adult Fitness
- Walking Trail
- Barbeque
- Meditation/Sensory Area
- Horseshoe Courts
- Community Garden



Concept Plan



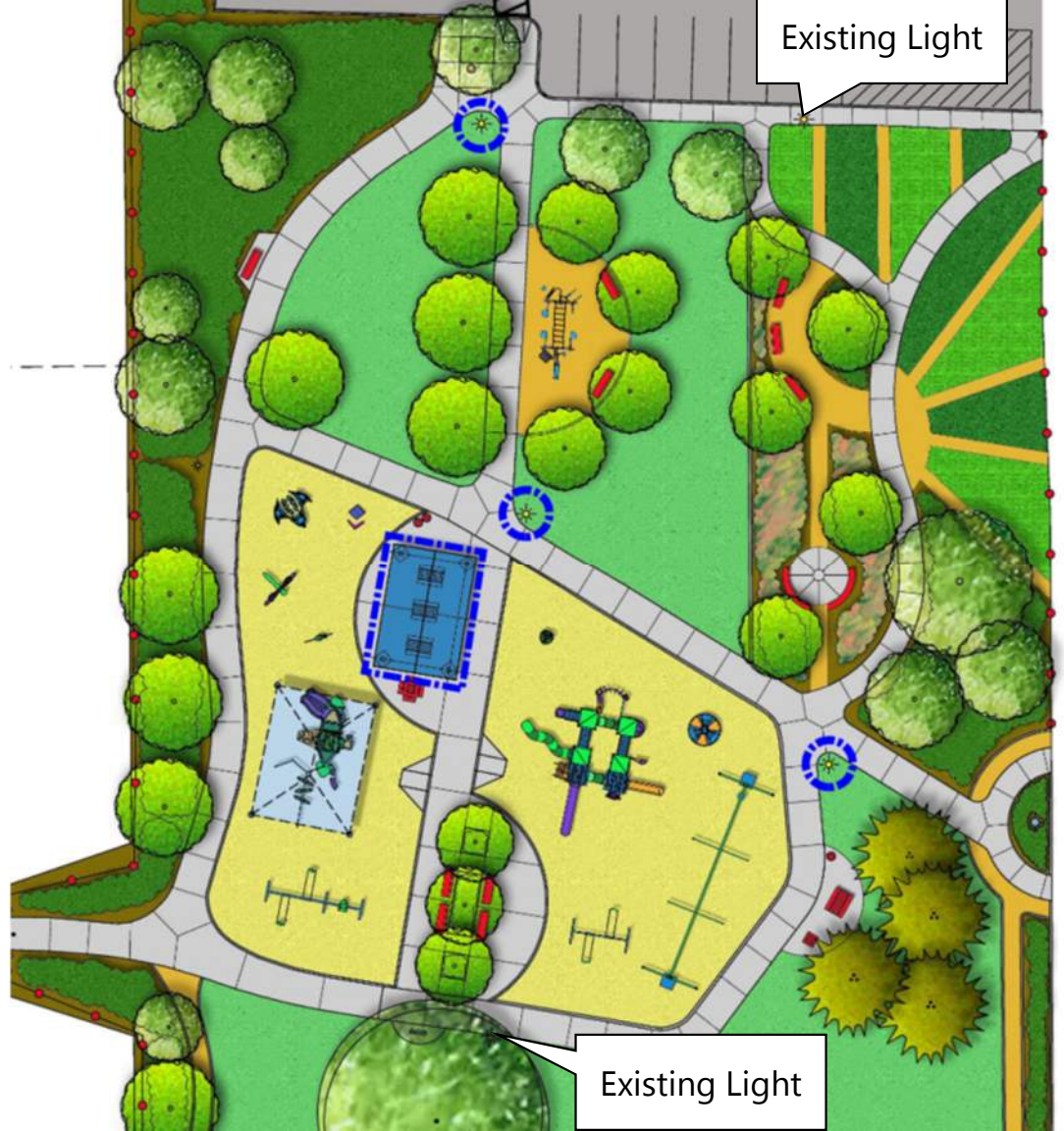
- Phase 1
 - Play Areas
 - Shade Structure
 - Picnic Tables
 - Benches
 - Drinking Fountain w/ Dog Bowl
 - Adult Fitness
 - Walking Trail
 - Horseshoe Courts
 - Security Lighting (3 new)
- Phase 2
 - Community Garden
 - Meditation/Sensory Garden



Security Lighting



- Three new lights
- Security light under shade structure



Tree Removal

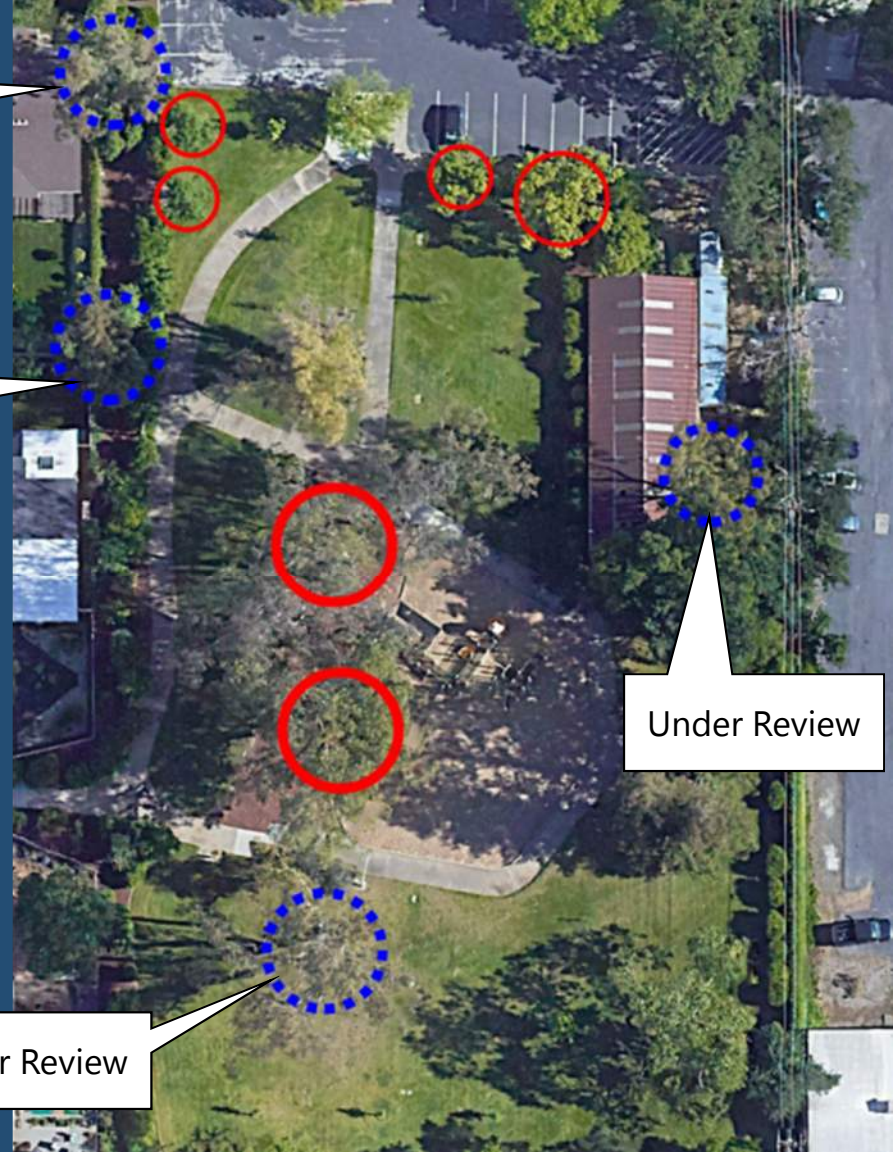
- Two Eucalyptus trees will be removed
- Four small trees will be removed
- Four Eucalyptus trees kept under review

Under Review

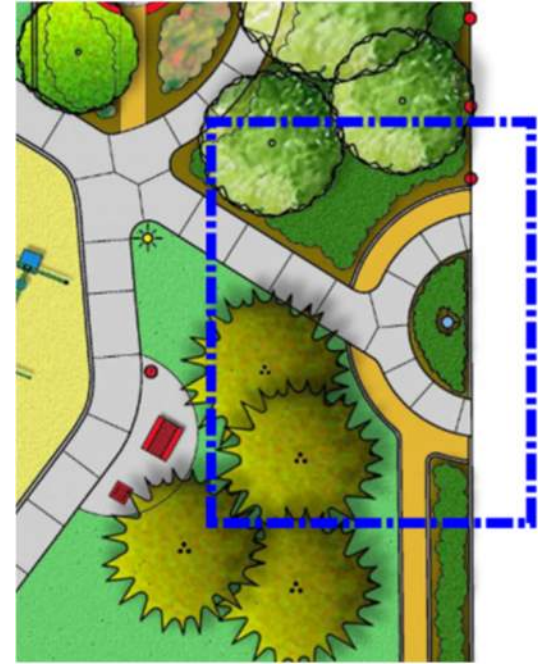
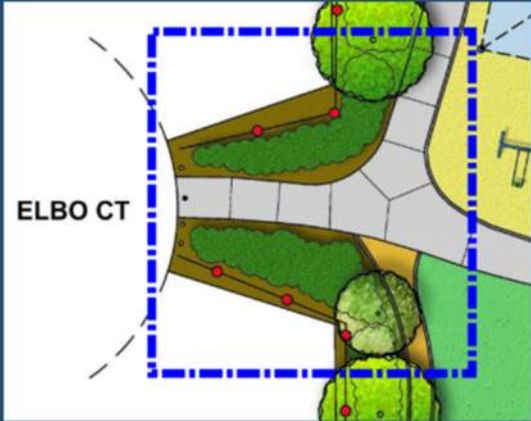
Under Review

Under Review

Under Review



Enhanced Entry



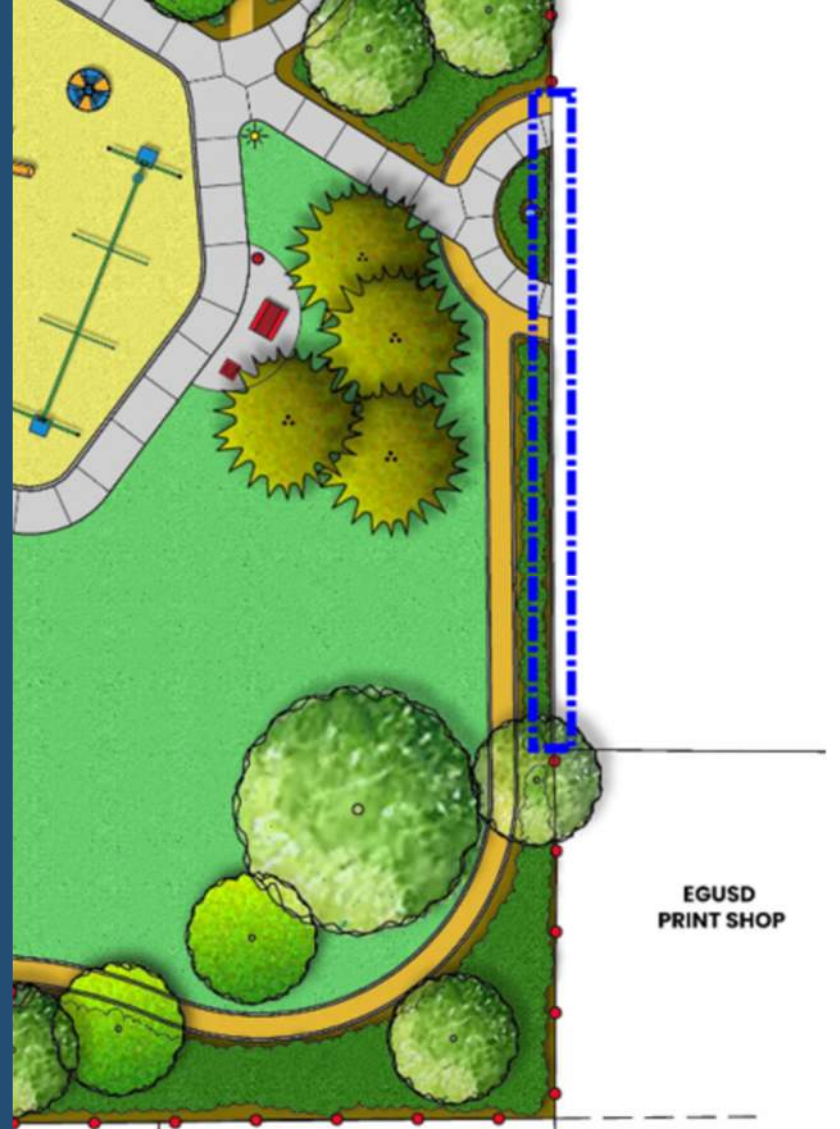
- Security lighting
- Clear existing overgrown vegetation
- Connection to walking trail



Fencing



- Removal of a portion of chain link fencing
- Remaining park fencing will remain as-is



Playground Ages 2 to 5



- Spring rider
- Separate area with shade structure
- Age appropriate, lower heights, low impact

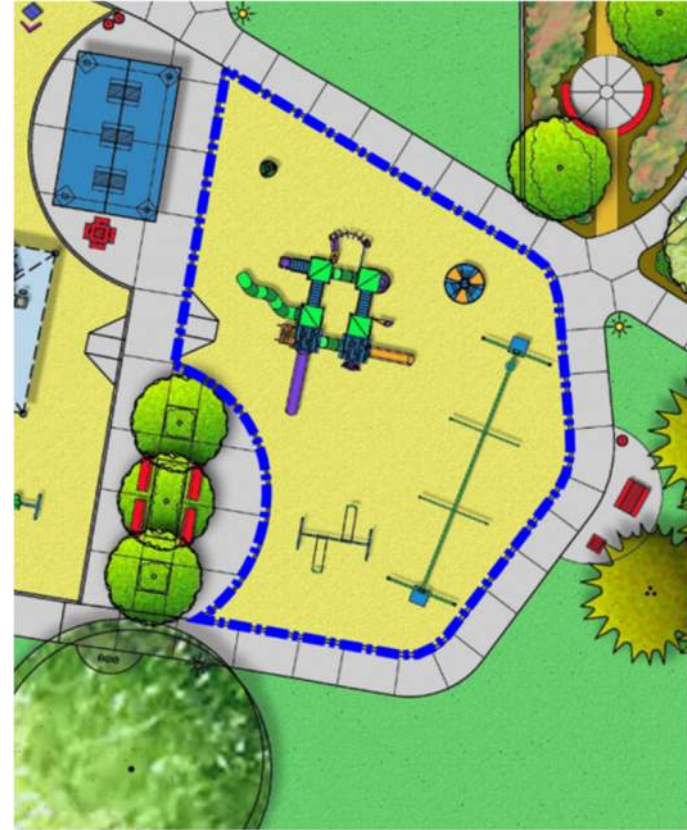
Playground Ideas



- Swings
- Seesaw



Playground Ages 5 to 12



- Net Climbers
- Net Spinner
- Physically challenging structures

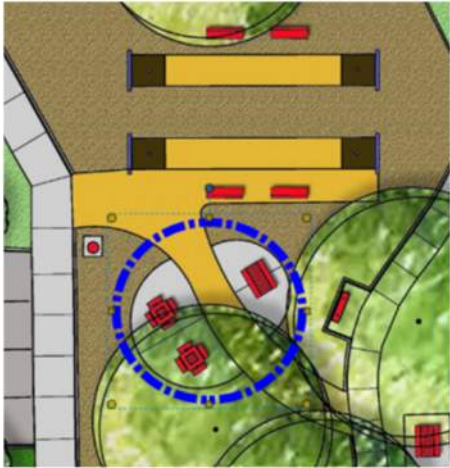
Playground Ideas



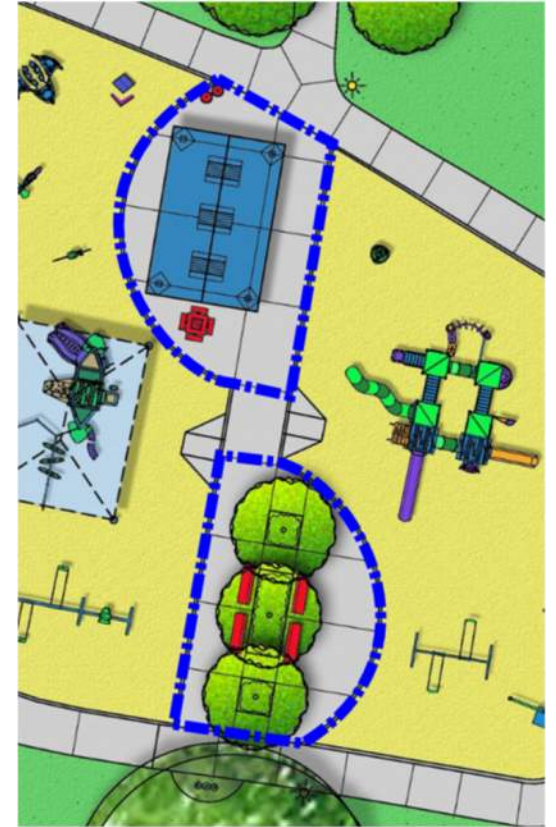
- Zip Line
- Plaza with seating



Picnic and Gathering Space

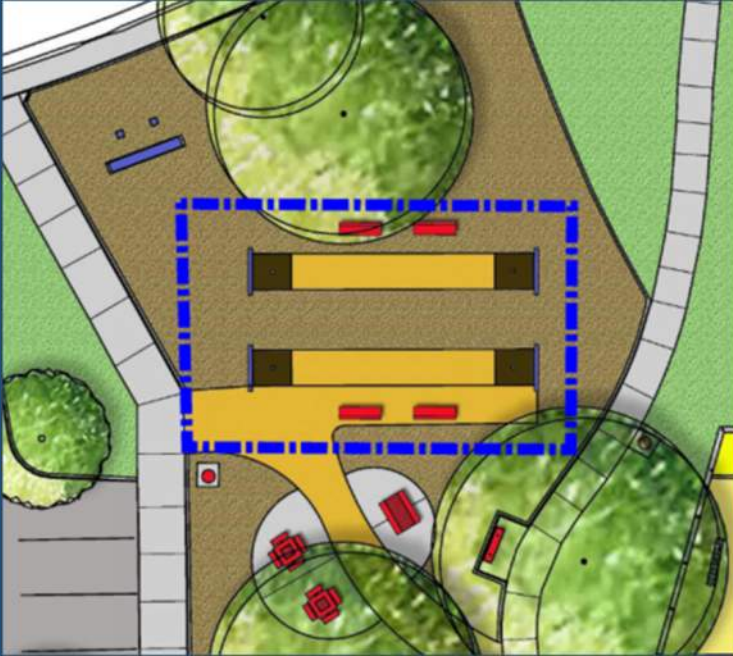


- Shade shelter
- Picnic tables and barbecue
- Gathering space for events

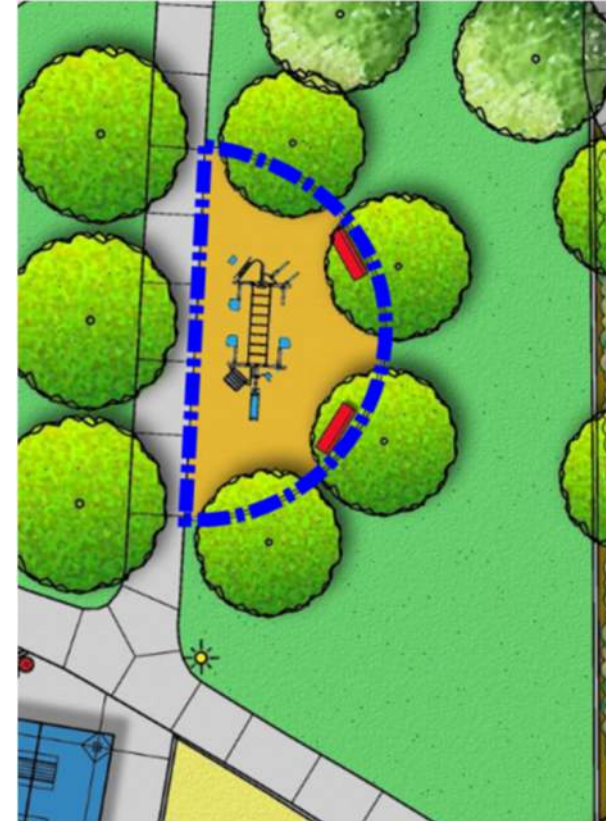


Beeman Park

Horseshoe Court



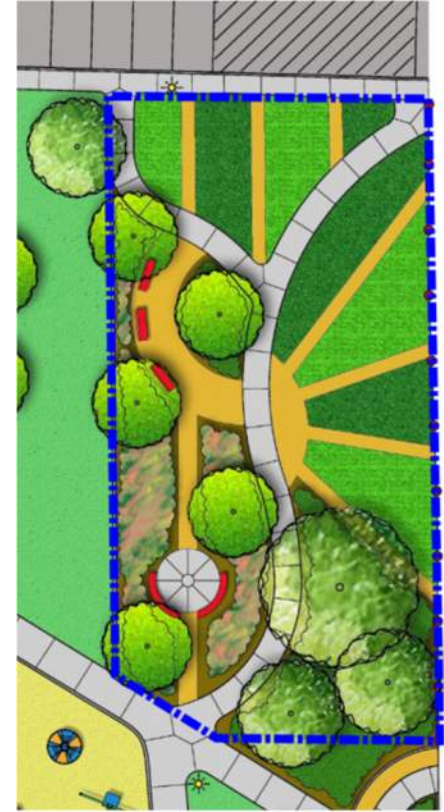
Adult Fitness and Walking Trail



- Decomposed granite surfacing
- Cardio and weight training



Phase 2: Community Garden



- Barn removal
(temporary bark mulch)
- Rest and reflection
- Educational opportunity

Next Steps

- Concept Plan posted to website
- Two-week comment period
- Master Plan presented to Board for approval
- Construction documents
- Project out to bid
- Construction
- Plant establishment period
- Grand Opening (anticipated in late 2025/early 2026)





Beeman Park Revitalization

Questions?

Thank you for your participation.